



平稳直上 安全舒适

Smooth and straightly upward, safe and comfortable



结构紧凑
Compact structure

鱼骨梁式短跑梯大大减小了空间跨度，使整机结构更为紧凑，可灵活适应建筑格式，为客户节省宝贵的建筑空间。

Flab-belly type short tread greatly reduces space span. It brings about more compact overall structure. It flexibly suits various building styles. It saves precious building spaces for vast customers.

无可比拟的经济性
Unrivaled economical properties

自动人行梯充分运用先进的制造工艺，大大提高了产品性能，缩短了整机的使用寿命，直接的效果就是减少了客户的运行成本。

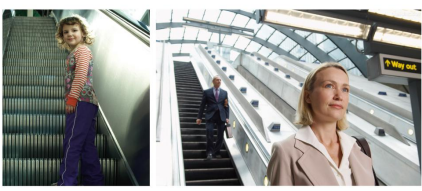
Moving with fully applied advanced manufacture craft and technology, it greatly enhances product properties. It prolongs overall use cycles. Its direct effect is to reduce the clients running cost.

非凡布局
Outstanding arrangement

鱼骨梁架技术和机械系统，扶手驱动系统的紧凑设计使扶梯的尺寸减小，大致的空间得到有效利用。

Outerlayer pre-installation technology, compact design of mechanical system and handrail drive system shorten escalator sizes. Therefore it effectively utilizes the building spaces.

Escalator 自动扶梯

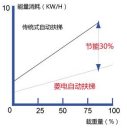


高效传动，变频节能

Effective drive, energy-saving variable-frequency

变频自动扶梯，充分运用先进的变频驱动技术与强大的驱动系统，在无人使用时，扶梯自动停止运行或变为低速运行；当有需要进入时，扶梯自动启动运行或自动转入低速运行，实现节能降耗，显著提高能效，最大限度降低电能消耗。

LINGDIAN escalator gives a full use of advanced variable frequency drive technology and powerful drive system. When no one uses it, it stops or runs slowly. When passenger enters, it starts again or automatically runs at rated speed. It's effective in drive efficiency and outstanding in energy-saving effect. It reduces escalator running cost to maximum degree.



先进科研技术，铸就高品质

Advanced scientific research technology casts the excellent quality

自动扶梯扶梯采用国际先进技术制造的生产流程，具有运行平稳、噪音低、经久耐用、维修方便等特点，其精巧的结构、精致的装饰、豪华亮丽的外形，提供给您舒适、舒适的全新感觉，让您领略现代建筑非凡魅力和尊贵气息。

LINGDIAN escalator applies the world advanced technology and design concept for manufacturing. It features an smooth running, low noise, durable, convenient repair etc. It grants you to appreciate the outstanding charm and deluxe manner of modern buildings by fine and exquisite structure, consummate elevator path, delicate belt, deluxe and attractive outline. It provides the passengers with a bright, comfortable, brand-new feeling.



Moving walk 自动人行道



大大减小空间跨度，迅速适用于各种建筑规格，其紧凑结构为设计大大节省了建筑空间。

It greatly reduces the space span. It flexibly suits various building layout. Its compact structure greatly saves the building space for vast passengers.

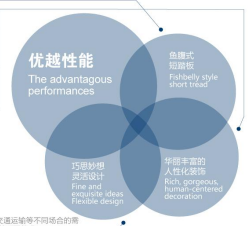
主要扶手带风格选择
一满足不同环境下的个性需求；冲压板式翻板
一更具立体感，内外盖板均采用高强度不锈钢板，美观耐用。

Main style selection of the handrail satisfies various individual requirements under different environments.

Stamping pattern style front plate is rich in 3D sense. Inmoulder cover plate applies high quality stainless steel. It is attractive and durable.

豪华自动人行道系列，可根据人们在商厦和公共交通枢纽等不同场合的需要进行定制设计，以满足不同的需求，让建筑锦上添花。

LINGDIAN moving walk series implements the flexible design according to the people's requirements in different occasions such as commercial and public traffic and transport etc. It brings about the more convenient installation process, the more attractive building outline.



多彩装饰，空间点缀更靓丽 Colorful decoration brings about more attractive spaces

豪华自动人行道适用于现代化都市中的大型超市、公共建筑、机场、展览中心及交通枢纽等公共交通换乘场合，自动人行道以其先进的技术规格，对于自动扶梯的乘客设计更人性化输入，让乘客的出行更舒适便利。不仅解决了大客流量的拥堵问题，又能满足长距离步行和运送行李、婴儿车、购物车、轮椅等人员在乘坐时快捷舒适的需求。且上下楼不需要有扶手带支撑，电气化节省了人工的出行和能源，其方便、快捷、美观的乘坐效果，由此也成为各大超市、机场、展览中心及交通枢纽的首选解决方案。

LINGDIAN moving walk is applicable for public traffic and transport areas such as large size supermarket, public building, airport, exhibition center, transport changeover station etc. in modern metropolis. Moving walk shortens the sizes of auto-walk because of compact design in guided pre-maturation technology, mechanical system, handrail drive system. It effectively utilizes the building spaces. It solves transport problem of large passenger flow. It satisfies long-distance walk, delivery of luggage cart, baby's cart, shopping cart, vehicle for disabled etc. people walk as easily as walking on firm earth in up/down shopping travel. It is greatly convenient for people's using and enjoying. It becomes first-choice solution plan in various big supermarkets, airports, exhibition centers, transport changeover stations because of its prompt convenient and pleasant travel requirements.

外观时尚 The outward appearance is fashionable

多款扶手带颜色和冲花款式翻板设计，缤纷多彩的装饰效果，可满足不同环境的个性化需求。

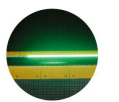
The various handrail coloring and stamping front plate designs has a colorful decorative effect which can meet the personalized needs of different environments.



Innovative technology 创新技术

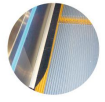
登梯照明 Demarcation lamp
绿色或蓝色光带在上/下楼梯时从扶手带（踏板）的结合出口中照射出，以提醒乘客注意踏板出口水平线，保障乘客安全。

Soft and green/blue spot light sends out from the engaging teeth in-between two adjacent steps (heads) in up/down end. It reminds the passengers to pay attention to the step entry/exit horizontal section. It thus enhances the travel safety.



围裙板刷 Skirt panel brush
在围裙板和踏板之间装有刷子使乘客的鞋子不会碰到围裙板。

Brush is installed between step and skirting so that the passengers' shoes do not touch the skirt panel.



急停按钮 Emergency stop button
当检测到故障时，自动人行道停止运行。

Once this button is pressed, down the passenger conveyor comes into an emergency stop.

驱动链轮测速装置 Speed detection by drive chain-wheel device
当链条发生空转或超速时，传感器会检测到链轮的输入信号，并立即将信号传回主控板，提醒工作人员处理。

When the escalator is reversible or over-speed, the sensor can detect the corresponding input signal. It transmits the signal to main control panel and the escalator host makes safety.



自动润滑系统 Automatic lubricator
由微电脑控制，在设定的时间发出加油信号，自动给油嘴加压，进行自动润滑。

It is controlled by micro-computer. It gives lubricating signal within the set period. It automatically connects with hydraulic pump for oiling and lubrication.



抗菌扶手带 Antibiotic handrail
抗菌扶手带能有效防止细菌的传播，保障乘客安全卫生。

The antibiotic handrail can prevent pathogen transmission effectively and the ride is made in safe and sanitary environment.

高精度梯路侧向导轨系统 Side guide high accuracy step guide rail system
中低档产品在运行过程中，高频率的高精度侧向导轨系统，可以保证踏板与梯路板之间的最小间隙，防止了踏板与梯路板之间的摩擦和噪音。

High rigidity big profile guide rail with noise used as intermediate step positioning, guarantee the minimum gap between the skirt and step, decrease the possibility of objects clamp in between.



梯级缺失保护装置 Step loss protection device
该装置安装在驱动站和转向站各设置一个，以确保在驱动站和转向站上下行时，踏板（踏板）缺失而导致的缺口都不会出现在入口站。驱动站和转向站均设有踏板缺失保护装置。只有在正常运行状态下，分别进行检测。该装置动作后，只待手动复位。

The detector is in driving station and steering station respectively. It ensures that the gap out of step (head) loss does not appear in the entry in up/down motion. Driving station and steering station sets protective detection functions. They shall be verified respectively under normal operation conditions. After the device acts, it can only be reset manually.



Standard function 标准功能

功能名称 Function name	功能描述 Function description
断电保护 Electric emergency protection	• 梯级踏板 (踏板) 在运行产生急停 • Generate brake energy caused from running of steps.
急停保护 Emergency stop button	• 当乘客急停按钮, 按下急停并关闭保护 • Push the emergency stop button to stop the escalator/stop walking against emergency cable.
阻梯保护 Escalator protection	• 当梯级踏板 (踏板) 与踏板之间保护 • Escalator against risk of foreign bodies being jammed into clearance between steps and skirting.
扶手入口安全保护 Handrail safety protection	• 当扶手入口有异物未及时处理 • Escalator against risk of foreign bodies being jammed into handrail entry.
驱动链条保护 Main drive chains safety protection	• 当驱动链条断裂或松弛时报警 • Escalator against risk of drive chains being breakage or undue elongation.
超速保护 Over-speed protection	• 当速度高于额定速度的20%时报警 • Escalator against risk of speed being over 20% of rated speed.
欠速保护 Under-speed protection	• 当速度低于额定速度的80%时报警 • Escalator against risk of speed less than 80% of rated speed.
非操作区保护 Non-operational restraint protection	• 梯级踏板和扶手带在运行方向固定方向而限制乘客保护 • Escalator against risk of unintentional restraint protection.
锁、钥匙保护 Lock or key/switch release protection	• 当锁/钥匙未解除时限制保护 • Escalator against risk of lock/switch not being released.
超速保护 Front limit protection	• 当扶手带速度超过限制 • Escalator against risk of short circuit.
超速保护 Over-temperature	• 当扶手带速度超过限制 • Escalator against risk of motor continually over-heat.
梯级 (踏板) 下陷保护 Step sagging protection	• 当梯级 (踏板) 梯级有下陷时报警 • Escalator against risk of steps being loose and sagging.
梯级 (踏板) 异物检测 Foreign body detection	• 当梯级 (踏板) 梯级有异物时报警 • Escalator against risk of foreign body or debris intrusion.
梯级安全保护 Comb safety protection	• 当梯级安全保护装置失效时报警 • Escalator against risk of safety device failure when the step enters the comb.
扶手带速度及扶手带保护 Handrail speed and skirting handrail protection	• 当扶手带速度及扶手带保护失效时报警 • Escalator against risk of handrail speed and skirting failure.
压梯板初次装置 Skirting and ramp device	• 当压梯板初次装置失效时报警 • Escalator against risk of skirting and ramp device failure.
梯级安全检测 Step missing detection	• 当梯级安全检测失效时报警 • Escalator against risk of step missing in the skirting.
梯级踏板打开报警开关 The skirting board open alarm switch	• 当梯级踏板打开报警开关失效时报警 • Escalator against risk of skirting board open alarm switch failure.
扶手带急停按钮的开门安全保护 Handrail emergency stop button safety	• 当扶手带急停按钮失效时报警 • Escalator against risk of handrail emergency stop button failure.
梯级速度开关 Step speed monitor switch	• 当梯级速度开关失效时报警 • Escalator against risk of step speed monitor switch failure.
梯级踏板的监测 Monitor of skirting device	• 当梯级踏板监测失效时报警 • Escalator against risk of skirting device failure.



Optional function 选配功能

护栏玻璃颜色 Guardrail glass color



扶手带颜色 Handrail color



变频控制技术 Frequency converter

选用频率变频器, 能有效降低能源消耗, 在人流量少的场合节能降耗 80%, 并有效减少峰值电流 80%。在空载情况下, 自动扶梯以低速运行, 当检测到乘客时, 扶梯恢复正常速度运行。

When chooses the frequency converter, it can effectively reduce the energy consumption, usually save 80% of the energy in the little passenger flow and efficiently cut down 80% of the peak-value current. The escalator operates at low speed under no-load conditions, while detects the accessing passenger, it will return to normal speed for the operation.



油水分离器 (适用于室外型) Oil/water separator (Apply to outdoor type)

油水分离器用于分离油、水, 通过油、水分离器, 油、水通过油、水分离器, 油、水通过油、水分离器, 油、水通过油、水分离器。

It separates the escalator oil and water. Rain exhausts through oil/water separator. We regularly clean oil/water for the environmental protection purpose.



Optional function 选配功能

梳齿照明 Comb illumination

照明被安装在靠近梳齿板旁的透明板上, 为梯级和踏板提供照明, 以便乘客安全地乘坐。

The illumination has been installed on the skirt panel near the comb plate. It offers the lighting for the step and the comb plate. It is more convenient for the passengers to up and down.



间歇运行 (自动启动/停止) Intermittent operation (Automatic start/stop)

依赖于新型入口传感器的传感器可以检测到进入传感器的乘客, 并自动开始运行。当所有乘客离开并触发停止, 以节约能源。

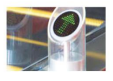
The sensor inside the handrail which is near the floor plate can detect the passenger that enters into the escalator, and then it will automatically start into the operation. After all the passengers leave, it will automatically stop the operation again in order to save the energy.



运行方向指示 Running direction indicator

运行方向指示器安装在扶手带入口, 以便乘客的运行方向指示, 确保乘客安全自如地乘坐。

The running direction and forbidden display mark have been placed in the inlet and outlet of the handrail. The obvious running or forbidden instruction ensures the safe riding of the passengers with great ease.



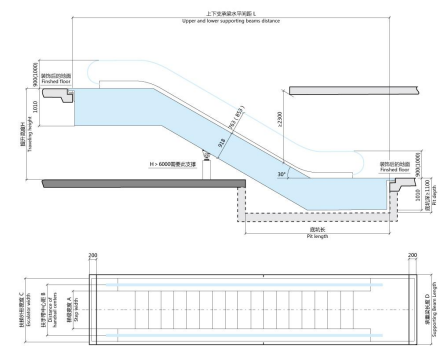
加热装置 Heating device

上部安装在主机房, 主要对上部机壳进行加热, 中部安装在扶梯中部, 下部安装在下孔, 主要对整个扶梯进行加热。

Each escalator usually installs three heating devices. One is beside the host in the upper machine room, it mainly heats the host. The second is installed in the mid-escalator. And the third is in the lower part, it mainly heats the whole escalator.



LF 30° escalator construction sketch LF 30° 自动扶梯土建图

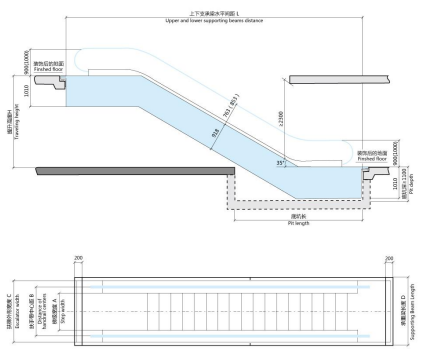


LF 30° 自动扶梯参数表 LF 30° escalator specifications

型号 Model	提升高度 (mm) Rising Height	额定速度 (m/s) Rated speed	理论输送能力 (人/分钟) Theoretical Capacity	梯级数 (个) Tread	扶手带速度 (m/s) Handrail speed	扶手带电机 (kW) Motor power	A (mm)	B (mm)	C (mm)	D (mm)
LF (800/2)	3000 - H - 6000	0.5	9000	30	2	7.5	600	838	1200	1200
LF (800/2)	3000 - H - 6000	0.5	4800	30	2	7.5	800	1038	1400	1400
LF (1000/2)	3000 - H - 6000	0.5	6000	30	2	7.5	1000	1238	1500	1600

注: 实际输送能力与乘客流量、扶梯间距、扶梯速度、扶梯宽度、扶梯高度、扶梯坡度、扶梯类型、扶梯品牌、扶梯型号、扶梯规格、扶梯参数、扶梯性能、扶梯质量、扶梯寿命、扶梯安全、扶梯环保、扶梯节能、扶梯智能、扶梯舒适、扶梯美观、扶梯耐用、扶梯可靠、扶梯稳定、扶梯灵活、扶梯便捷、扶梯经济、扶梯实用、扶梯先进、扶梯领先、扶梯卓越、扶梯完美、扶梯极致、扶梯巅峰、扶梯顶峰、扶梯顶端、扶梯极致、扶梯完美、扶梯卓越、扶梯领先、扶梯先进、扶梯实用、扶梯经济、扶梯便捷、扶梯灵活、扶梯稳定、扶梯可靠、扶梯耐用、扶梯美观、扶梯舒适、扶梯智能、扶梯节能、扶梯环保、扶梯安全、扶梯寿命、扶梯质量、扶梯性能、扶梯参数、扶梯规格、扶梯型号、扶梯品牌、扶梯类型、扶梯坡度、扶梯高度、扶梯宽度、扶梯间距、扶梯乘客流量、扶梯实际输送能力。

LF 35° escalator construction sketch
LF 35° 自动扶梯土建图

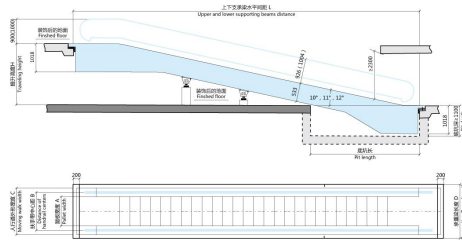


LF 35°自动扶梯参数表 LF 35° escalator specifications

型号 Model	提升高度H Traveling height	额定速度 (m/s) Rated speed	理论输送能力 (人/分) Theoretical Capacity	小平台数 No. of horizontal space	驱动主机 功率 (kw) Motor power	A (mm)	B (mm)	C (mm)	D (mm)
LF (800/35)	3000 - H - 6000	0.5	3800	35	2 7.5	600	800	1200	1500
LF (1000/35)	5100 - H - 6000	0.5	4800	35	2 7.5	600	800	1400	1600
LF (1300/35)	3000 - H - 4000	0.5	6000	35	2 11	1000	1200	1600	1900
LF (1000/35)	4000 - H - 6000	0.5	6000	35	2 11	1000	1200	1600	1900

1. 本表格仅供参考，不作为设计依据。
2. 如表格上述规格不符，请咨询LDE技术支持。

LR 10°-12° moving walk construction sketch
LR 10° - 12° 自动人行道土建图



LR 10°-12°自动人行道参数表 LR 10°-12° moving walk specifications

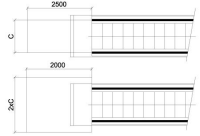
型号 Model	提升高度H Traveling height	额定速度 (m/s) Rated speed	理论输送能力 (人/分) Theoretical Capacity	扶手带 速度 Inclination	扶手带 宽度 Belt width	A (mm)	B (mm)	C (mm)	D (mm)
LR (800/10)	2500 - H - 4200	0.5	4800	10	75	800	1030	1400	1400
LR (1000/10)	4200 - H - 5900	0.5	6000	10	75	1000	1230	1600	1600
LR (1300/10)	2500 - H - 3300	0.5	6000	10	75	1000	1230	1600	1600
LR (800/12)	3300 - H - 4600	0.5	4800	11	75	800	1030	1400	1400
LR (1000/12)	4600 - H - 6000	0.5	6000	11	75	1000	1230	1600	1600
LR (1300/12)	2500 - H - 4200	0.5	6000	11	75	1000	1230	1600	1600
LR (800/12)	2000 - H - 2400	0.5	6000	11	75	800	1030	1400	1400
LR (1000/12)	2400 - H - 4700	0.5	6000	11	75	1000	1230	1600	1600
LR (1300/12)	4700 - H - 5900	0.5	6000	11	75	1000	1230	1600	1600
LR (800/12)	4500 - H - 6000	0.5	4800	12	75	800	1030	1400	1400
LR (1000/12)	6000 - H - 6000	0.5	6000	12	75	1000	1230	1600	1600
LR (1300/12)	3000 - H - 3500	0.5	6000	12	75	1000	1230	1600	1600
LR (1000/12)	4000 - H - 6000	0.5	6000	12	75	1000	1230	1600	1600

1. 本表格仅供参考，不作为设计依据。
2. 如表格上述规格不符，请咨询LDE技术支持。

Installation notice
土建安装须知

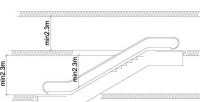
除了确保合同土建的高尺寸和要求，以下的要求也应达到。
Besides complying with the drawing of the contract, attention should also be drawn to the following:

- 为了确保扶梯和人行道的使用安全，自由空间必须在每个楼层处理提供足够的空间。(参见最小尺寸表)
- C-扶手带中宽度
- To ensure the safety of the escalator and moving walk, free space should also be large enough in the landing area (see the minimum size table).
- Handrail belt width



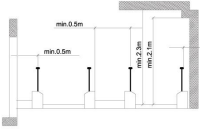
顶空安全距离
Vertical safety distance

- 在楼层踏板上的任何障碍物，至少有2.3米不受任何障碍的安全距离。
- 特别重要：如果一台扶梯上的另一台扶梯的顶升高度<3米，就不可能达到3米的安全距离。
- There should be at least 2.3m upside safety distance starting upward from the step board.
- Notice: if the vertical rise of one escalator, which is installed above another one, is less than 3.3m, the upside safety distance can not reach 2.3m.



扶梯（人行道）安装必须保证必须的水平安全距离
Escalator and moving walk horizontal safety distance

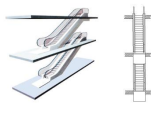
- 扶手带外缘至障碍物其水平安全距离必需大于80mm。
- 楼层踏板上方垂直安全距离必需大于2.3m。
- 扶手带区上方垂直安全距离必需大于2.1m。
- 对扶梯井道或扶梯人行道交叉布置，扶手带中心到障碍物的水平安全距离必需大于1.5m。
- 如未达到要求，高层专用的消防电梯井道，可向国家电梯公司咨询。
- The horizontal distance between the handrail edge and the wall or other objects should be more than 80mm.
- The vertical distance above the step board should be more than 2.3m.
- The vertical distance above the handrail space should be more than 2.1m.
- In case of floor spaces or the cross layout of escalators and moving walk, the safety distance between the handrail center and the object should be more than 1.5m.
- If the above-mentioned requirements cannot be met, a special protection device and a bumper rail should be used.
- For further information, please contact LINCORAN elevator.



Perfect layout
完美布局

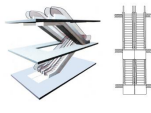
断续布置式（单向交通）
Intermittent layout style (one-way traffic)

适用于较小规模中三个楼层之间的运行。
Suitable for small-scale shopping malls with three floors.



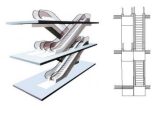
平行连续布置式（双向交通）
Parallel and continuous layout style (two-way traffic)

这种布置对顾客来说，有些不方便，但好商场非装不可，因为它能让顾客在扶梯上购物时，同时也能看到扶梯上的其他顾客。
The layout of this type may cause slight inconvenience to shoppers, but it is indispensable for shopping malls since they can market certain products and services to shoppers on their way to change escalators.



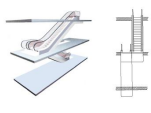
交叉连续布置式（双向交通）
Cross and continuous layout (two-way traffic)

安装在多楼层中的交叉连续布置的扶梯，可以让两个运行方向，同时使用扶梯。这在楼层较多的大型商场或公共场合，它可以减少小主楼层之间的运行时间。
Installed in buildings with multiple floors, the crossover layout can allow in two directions to limit the traveling time between floors. This type is widely used in shopping malls and now being used more and more in government buildings and public places.



连续布置式（单向交通）
Continuous layout style (one-way traffic)

连续布置式的扶梯或人行道，把若干层楼连接起来，它比断续布置式需要更多的空间。
Continuous layout type escalator and moving walk can connect several floors, but they need more space than the intermittent layout.



Custom-made exclusive repair and maintenance plans

定制专属维保方案

LINGDIAN Elevator offers exceptionally sweet services! It sets up nation-wide branches, repair and maintenance networks all over the country. According to the product characteristics and customer conditions, it elaborately has a set of exclusive elevator repair & maintenance plan custom-made for each user. System quickly recognizes product identification with 24-hour all-weather preparation. It frees you from any worries. LINGDIAN offers sincere, considerate, effort-saving, trustworthy, patient nanny services for you.

从未有一种服务可以如此贴心，聚电电梯有限公司分支机构覆盖全国，落实全国维保网络，并依据产品特性及客户情况，为每位用户提供定制专属维保方案，彻底解除您的后顾之忧。选择聚电，您将尊享“五心保姆服务”。



LDE>



诚心 Sincere

我们的一切服务发自内心，为客户提供量身定制的维保方案，解除后顾之忧。

We wholeheartedly serve vast clients. We have repair and maintenance plans custom-made for vast customers. It frees them from any worries.

省心 Effort-saving

优质服务是我们的专业素养，快速反应产品身份系统，全国服务热线24小时全天候为您服务。

"Superior and effective" are our professional qualities. System quickly identifies products. Our nationwide 24-hour service hotline supplies you with all-weather fast services.

贴心 Considerate

我们换位思考，满足您一切有关产品服务的诉求，切实解除您的后顾之忧。

We are considerate for you. We satisfy all of your requirements regarding product services. Whenever and wherever you are, we always provide you with our most sincere services.

放心 Trustworthy

除了最优秀的产品，我们更将心安放在您身边，真正解除您的后顾之忧。

Apart from the most superior products, we have nationwide branch coverage. Repair and maintenance networks are wide-spreading all over the country. We effectively handle all problems for you!

耐心 Patient

我们对每一个客户，都将以100%的耐心，从最佳的个性化定制经验与您相伴。

聚电，我们将带给您属于聚电品牌的优质服务。

LINGDIAN is 100% patient to each client. From before sale individual custom-made to installation, repair and maintenance, for every step forward, we take you exclusively superior service of LINGDIAN brand.